



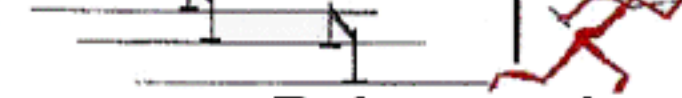
Establishing the criteria for different pipe systems & Analysis
Interpreting the pressure behavior, plots, FFTs, oscillographs - Diagnostics.
Before routing problem pipework, buying the wrong pump, **PulseView & ShockView** Prediction.

Publications - introduction to Pulse & Shock Analysis, Diagnostics, and software predictive models.

Pub. 1 Pulsation Analysis and Diagnostics, removing the mystery - "Exposing the Witchcraft" In graphics and "cartoons" :-

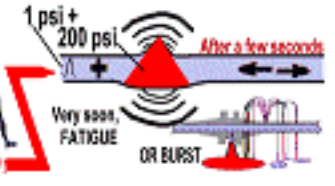


& The 400 Meters



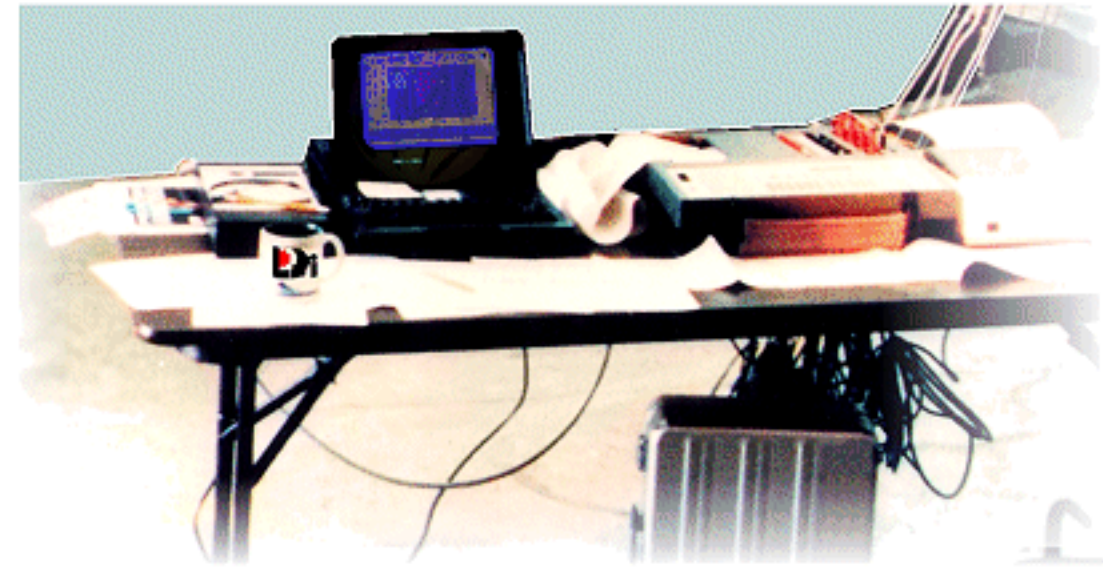
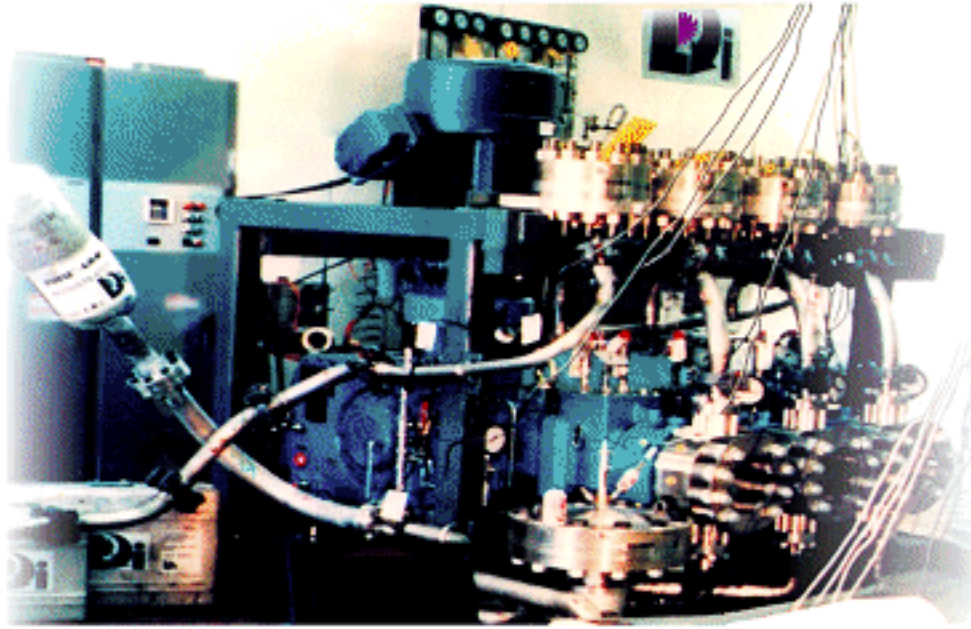
HARD SYSTEMS KILL PUMPS

The Effects are cumulative SOON CATASTROPHE PRESSURE PULSATION can be like that too

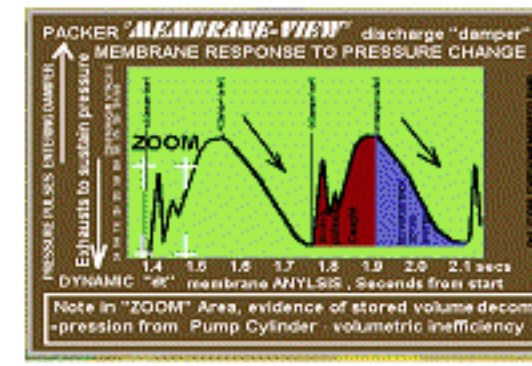
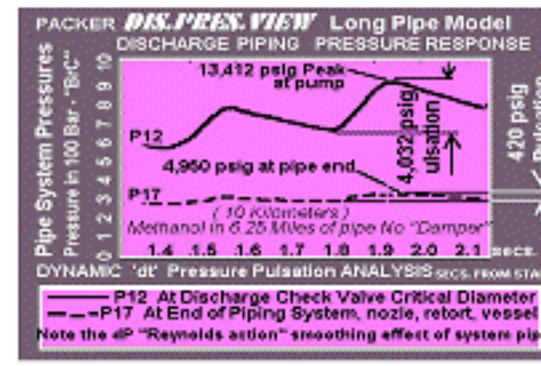


Being equipped to discuss the problem, and understand the answers.

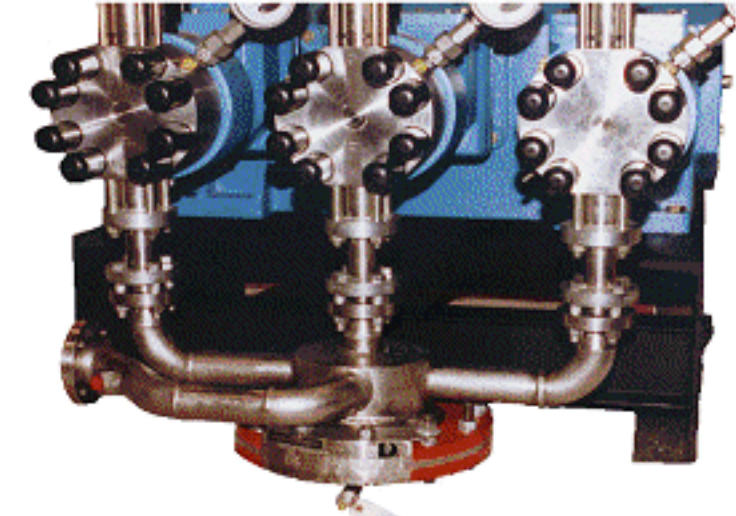
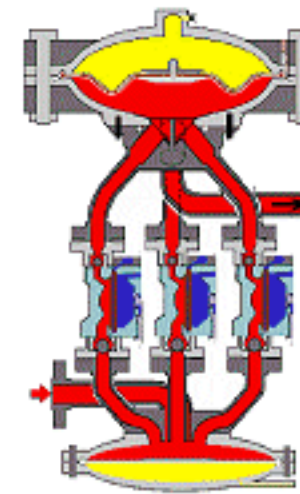
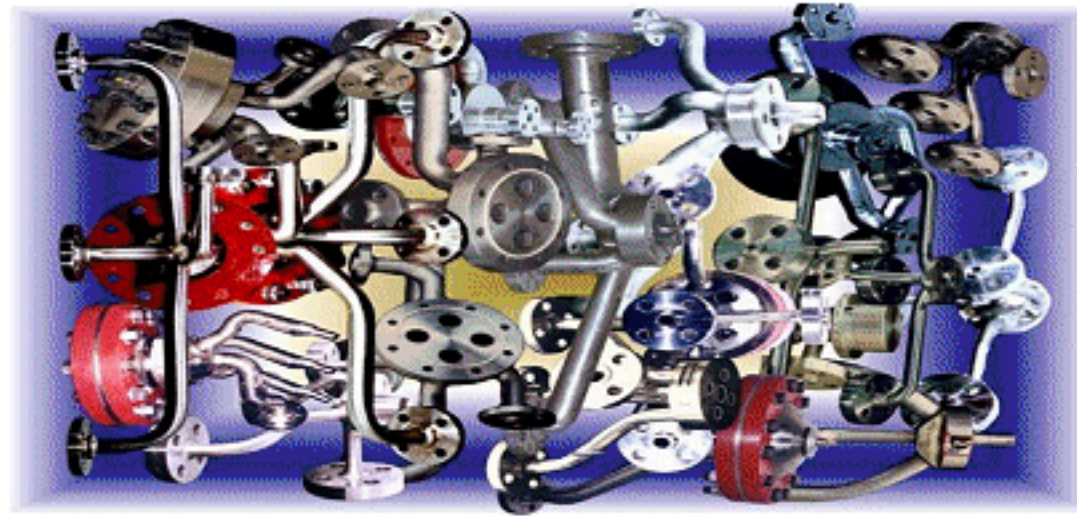
Pub. 3 Recording a system; data capture, some bare essentials, equipment characteristics.



Pub. 4 Predicting Pulsation, or Pipe Shock. Input data for PulseView or ShockView software.



Pub. 5 A pound of Prevention is worth a cart load of Cure; Designing the Pipes, stops interaction.



Pub. 6 How much pulsation is allowable for a given system? Calcs, Graphics, & Nomogram.

Table with columns for 'SYSTEM DATA' and 'EQUATION'. It lists various parameters like flow rate, pipe diameter, and material properties.

Table with columns for 'CALCULATIONS'. It shows mathematical formulas and results for determining allowable pulsation levels.

Table with columns for 'CALCULATIONS'. It shows mathematical formulas and results for determining allowable pulsation levels.

