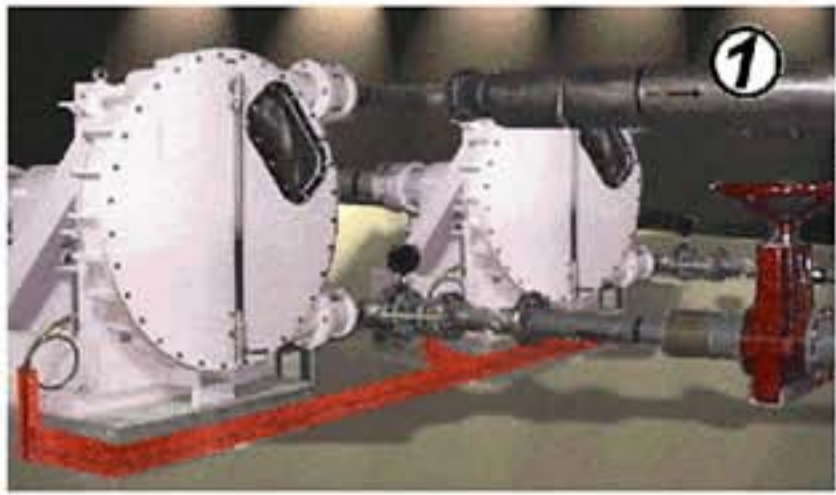
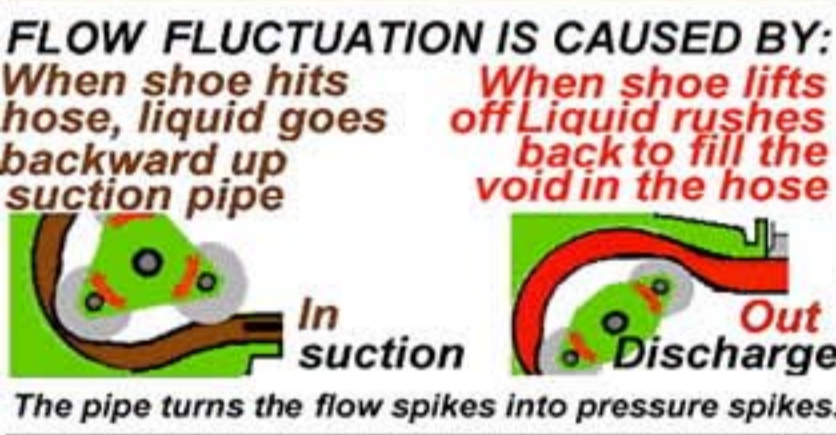
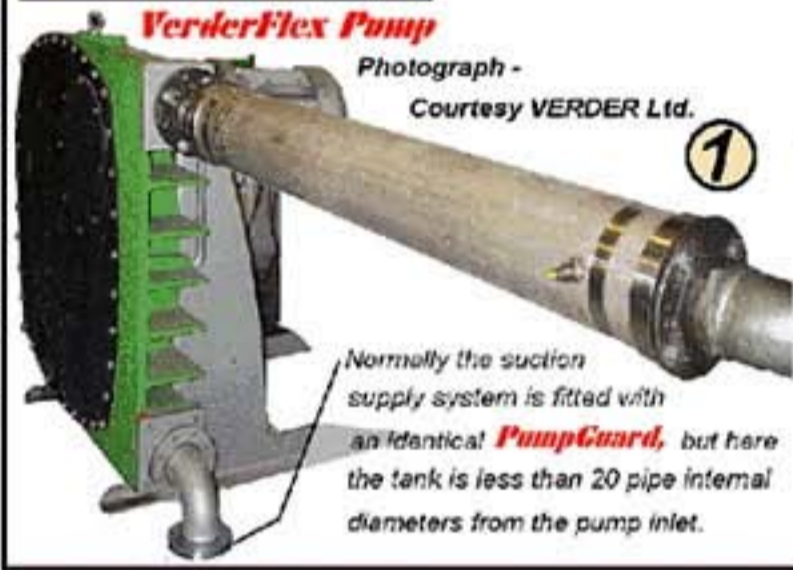


**G Halving the cost and tripling the performance, of staying "pulse free" in hose pump systems.**

**P15 DAMPING SUCTION SPIKE, & DISCHARGE "BACK-FLOW" ON HOSE PUMPS**



- ① **PUMPGUARD** - Elastomer and ClearFlow
- ② **PIPEHUGGER LP TW** - Elastomer + direction change
- ③ **PIPEGUARD LP PLAS** - Elastomer "T" off line Plastic
- ④ **PIPEHUGGER LND** - Elastomer lined "Td" off line
- ⑤ **FLEXORBER LP TW** - FLEXFLON PTFE & flow-thru.



When you see a damper or a pump of particular interest, please request literature dedicated to that subject.

The flow rate can not increase or decrease momentarily because the speed of rotation is constant. So the blip from the shoe or wheel mashing the hose, has to result in "back flow".

Flexorber LP is chosen where ease of flush through in place cleaning is enhanced by using DuPont Teflon or LDi FLEXFLON. And where the compatibility of PTFE diaphragms will increase life.

Flexorber LP is an off the shelf inventory damper in the 2 connection standard form.

⑤

①

If you only wish to use one connection, save a "T" and use the other for system drain etc.

PipeHugger LP is chosen where you want an elastomer compatibility, plus in place flush through. Flow through is standard, a single connection is special, because even if you do not wish to use flow through, you can save a "T" for your RV or drain by using the second connection.

PipeHugger LP is an off the shelf inventory item with two connections.

②

①

If you only wish to use one connection, save a "T" and use the other for system drain etc.

Single connection PipeGuard flow fluctuation dampers are applicable where a 60% fall in pressure pulsation damping ability is not a concern.

PipeGuard with the addition of a single flange is available as a special at extra cost and lead time.

Stainless PipeGuards are less expensive than plastic pressure vessels and safer in the cold.

You can always oversize the damper to compensate for the pulse going straight past.

③

①

PipeHugger LP Lined with the same elastomer as the bladder is a cost saver where plastic would be dangerous and the compatible metal is expensive.

Only one small insert \* of special material, Tantalum, Zirconium etc. is necessary.

The flange face on the end of LND/Peg is also provided with an FNPT thread.

④

① PumpGuard for systems 3" through 12" pipe connection.

①

**PUMPGUARD for perfect suction conditioning**